

Year 10 Boys AFL *Carnivals* 2025



Division 1	Wednesday 20 August	Lightning Park
Division 2	Wednesday 30 July	Lightning Park
Division 3	Wednesday 13 August	Lightning Park
Division 4	Wednesday 6 August	Lightning Park
Division 5	Wednesday 6 August	Atwell Reserve
Division 6	Wednesday 30 July	Altone Park
SW Division	Wednesday 30 July	Hay Park



CARNIVAL MANAGERS

<i>CARNIVAL</i>	<i>DATE</i>	<i>VENUE</i>	<i>MANAGER</i>
Boys Div 1	Wed 20 Aug	Lightning Park	Rebecca Wright - 0408 905 770
Boys Div 2	Wed 30 July	Lightning Park	Suzie Ehlers - 0400 252 112
Boys Div 3	Wed 13 Aug	Lightning Park	Suzie Ehlers - 0400 252 112
Boys Div 4	Wed 6 Aug	Lightning Park	Trent Sharpe - 0408 958 415
Boys Div 5	Wed 6 Aug	Atwell Reserve	Rebecca Wright - 0408 905 770
Boys Div 6	Wed 30 July	Altone Park	Trent Sharpe - 0408 958 415
Boys South West	Wed 30 July	Hay Park	Tom Bottrell - 0416 127 839

DIVISIONS, VENUES AND GUERNSEY COLOURS

Division 1

Lightning Park - 20/08/2025

CBC | black with green 'V'
Emmanuel CC | navy, teal & white
Mazenod | royal blue/white
Sacred Heart | red with white stripes
(SW winner)

Division 2

Lightning Park - 30/07/2025

Corpus Christi | white with burgundy & navy crest
John XXIII | navy & gold
Kolbe CC | yellow, navy & red
Mandurah CC | maroon
Mater Dei | navy with white & light blue 'V'

Division 3

Lightning Park - 13/08/2025

Court Grammar | teal
Kennedy BC | navy
La Salle | red & yellow
Nagle CC | green & gold
Newman | light & royal blue

Division 4

Lightning Park - 6/08/2025

Aranmore CC | navy & red
Quinns BC | black, teal & red
South Coast BC | blue
Ursula Frayne CC | black
CBC 2 | black & green

Division 5

Atwell Reserve - 6/08/2025

All Saints' | sky blue, navy & white
Foundation | maroon
Mother Teresa | blue & white
Seton CC | black & red
St John Bosco | purple, white & teal

Division 6

Altone Park - 30/07/2025

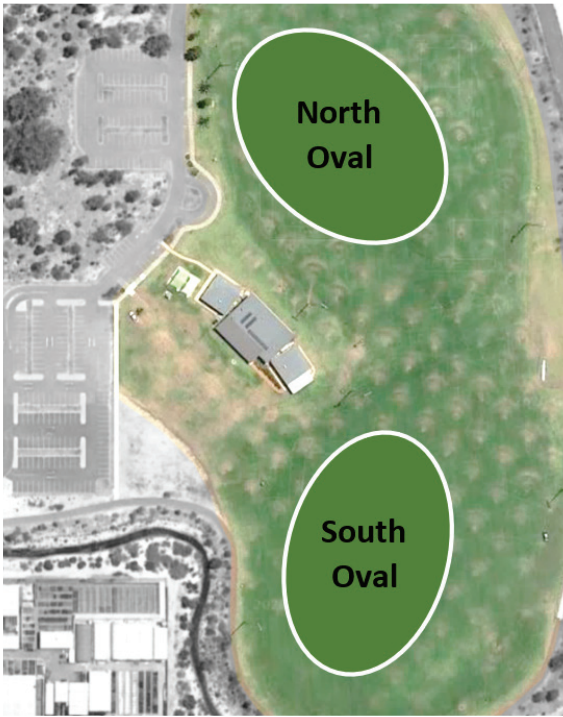
Living Waters LC | blue & white strip
Mercy | blue & yellow
Servite | black with green white trim
Kingsway | navy & red
Lumen Christi | light blue & maroon
Swan CC | white with blue sash & swan logo

South West Division

Hay Park - 30/07/2025

Bunbury CC | white, green & red
Bunbury CGS | navy blue & gold
Frederick Irwin | gold
Mandurah BC | navy & gold
Our Lady of Mercy | navy blue
St Mary MacKillop | maroon & white

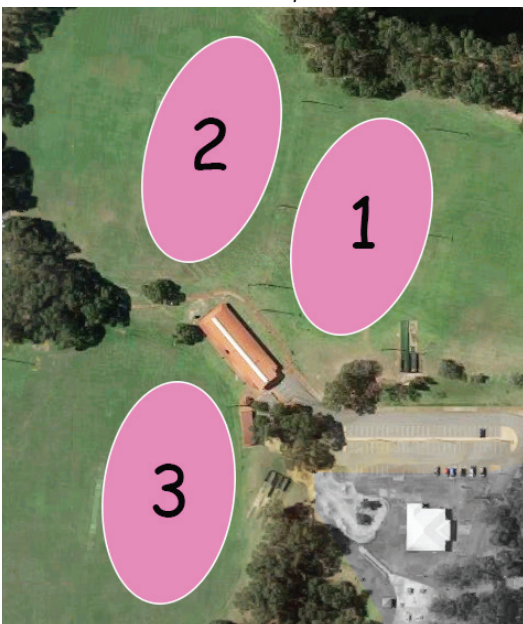
Lightning Park
Della Rd, Noranda



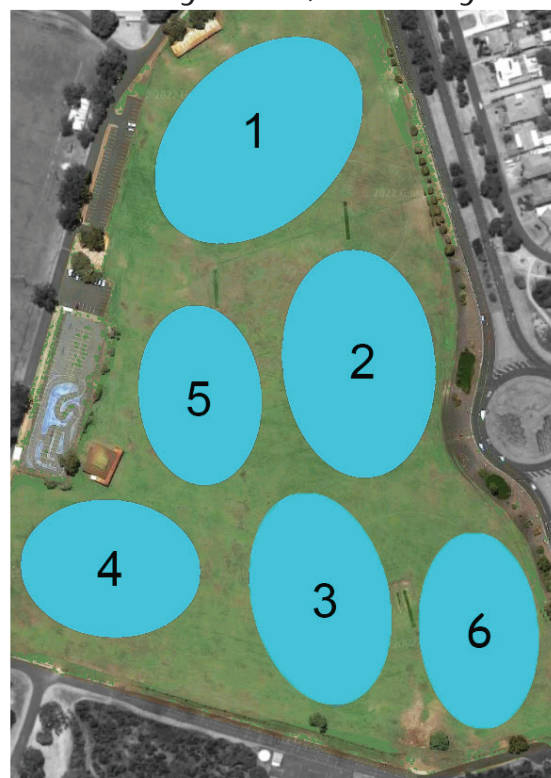
Atwell Reserve
Brenchley Dr, Atwell



Altone Park
332 Benara Rd, Beechboro



Hay Park
Rotary Drive, Bunbury



Boys Division 1

Wed 20 Aug

Lightning Park

Set-up school: Mazenod College

FIELD

Round 1 09:45 AM

CBC	v	Emmanuel	N
Mazenod	v	Sacred Heart	S
SW winner		BYE	

Round 2 10:35 AM

SW winner	v	Sacred Heart	N
CBC	v	Mazenod	S
Emmanuel		BYE	

Round 3 11:25 AM

Mazenod	v	SW winner	N
Sacred Heart	v	Emmanuel	S
CBC		BYE	

Round 4 12:15 PM

Emmanuel	v	Mazenod	N
SW winner	v	CBC	S
Sacred Heart		BYE	

Round 5 1:05 PM

Sacred Heart	v	CBC	N
Emmanuel	v	SW winner	S
Mazenod		BYE	

Presentations & acknowledgements commence at 1:50 PM

All matches consist of 2 x 15 minute halves,
with a 5-minute half time break.

There is 15 minutes change-over time between games.

Boys Division 2 Wed 30 July Lightning Park

Set-up school: John XXIII College

FIELD

Round 1 09:45 AM

Corpus	v	John XXIII	N
Kolbe	v	Mater Dei	S
Mandurah CC		BYE	

Round 2 10:35 AM

Mandurah CC	v	Mater Dei	N
Corpus	v	Kolbe	S
John XXIII		BYE	

Round 3 11:25 AM

Kolbe	v	Mandurah CC	N
Mater Dei	v	John XXIII	S
Corpus		BYE	

Round 4 12:15 PM

John XXIII	v	Kolbe	N
Mandurah CC	v	Corpus	S
Mater Dei		BYE	

Round 5 1:05 PM

Mater Dei	v	Corpus	N
John XXIII	v	Mandurah CC	S
Kolbe		BYE	

Presentation & acknowledgements commence at 1:50 PM

**All matches consist of 2 x 15 minute halves,
with a 5-minute half time break.**

There is 15 minutes change-over time between games.

Boys Division 3

Wed 13 Aug

Lightning Park

Set-up school: La Salle College

FIELD

Round 1

09:45 AM

Kennedy	v	La Salle	N
Nagle	v	Newman	S
Court		BYE	

Round 2

10:35 AM

Court	v	Newman	N
Kennedy	v	Nagle	S
La Salle		BYE	

Round 3

11:25 AM

Nagle	v	Court	N
Newman	v	La Salle	S
Kennedy		BYE	

Round 4

12:15 PM

La Salle	v	Nagle	N
Court	v	Kennedy	S
Newman		BYE	

Round 5

1:05 PM

Newman	v	Kennedy	N
La Salle	v	Court	S
Nagle		BYE	

Presentation & acknowledgements commence at 1:50 PM

All matches consist of 2 x 15 minute halves,
with a 5-minute half time break.

There is 15 minutes change-over time between games.

Boys Division 4

Wed 6 Aug

Lightning Park

Set-up school: CBC

FIELD

Round 1

09:45 AM

Aranmore	v	Quinns	N
CBC 2	v	Ursula Frayne	S
South Coast		BYE	

Round 2

10:35 AM

South Coast	v	Ursula Frayne	N
Aranmore	v	CBC 2	S
Quinns		BYE	

Round 3

11:25 AM

CBC 2	v	South Coast	N
Ursula Frayne	v	Quinns	S
Aranmore		BYE	

Round 4

12:15 PM

Quinns	v	CBC 2	N
South Coast	v	Aranmore	S
Ursula Frayne		BYE	

Round 5

1:05 PM

Ursula Frayne	v	Aranmore	N
Quinns	v	South Coast	S
CBC 2		BYE	

Presentation & acknowledgements commence at 1:50 PM

All matches consist of 2 x 15 minute halves,
with a 5-minute half time break.

There is 15 minutes change-over time between games.

Boys Division 5

Wed 6 Aug

Atwell Reserve

Set-up school: St John Bosco

FIELD

Round 1

09:45 AM

All Saints'	v	Mother Teresa	E
Seton	v	St J Bosco	W
Foundation		BYE	

Round 2

10:35 AM

Foundation	v	St J Bosco	E
All Saints'	v	Seton	W
Mother Teresa		BYE	

Round 3

11:25 AM

Seton	v	Foundation	E
St J Bosco	v	Mother Teresa	W
All Saints'		BYE	

Round 4

12:15 PM

Mother Teresa	v	Seton	E
Foundation	v	All Saints'	W
St J Bosco		BYE	

Round 5

1:05 PM

St J Bosco	v	All Saints'	E
Mother Teresa	v	Foundation	W
Seton		BYE	

Presentation & acknowledgements commence at 1:50 PM

All matches consist of 2 x 15 minute halves,
with a 5-minute half time break.

There is 15 minutes change-over time between games.

Boys Division 6

Wed 30 July

Altone Park

Set-up school: Mercy College

FIELD

Round 1 09:45 AM

Lumen Christi	v	Mercy	1
Kingsway	v	Living Waters	2
Servite	v	Swan	3

Round 2 10:35 AM

Kingsway	v	Mercy	1
Servite	v	Lumen Christi	2
Swan	v	Living Waters	3

Round 3 11:25 AM

Swan	v	Lumen Christi	1
Kingsway	v	Servite	2
Mercy	v	Living Waters	3

Round 4 12:15 PM

Mercy	v	Servite	1
Lumen Christi	v	Living Waters	2
Swan	v	Kingsway	3

Round 5 1:05 PM

Living Waters	v	Servite	1
Mercy	v	Swan	2
Lumen Christi	v	Kingsway	3

Concluding acknowledgements commence at 1:50 PM

All matches consist of two 15 minute halves,
with a 5-minute half time break.

There is 15 minutes change-over time between games.

Boys SW Division

Wed 30 July

Hay Park

Set-up school: Bunbury CC

FIELD

Round 1

09:45 AM

Bunbury CGS	v	Frederick Irwin	1
Mandurah BC	v	O Lady o Mercy	2
St M MacKillop	v	Bunbury CC	3

Round 2

10:35 AM

Mandurah BC	v	Frederick Irwin	1
St M MacKillop	v	Bunbury CGS	2
Bunbury CC	v	O Lady o Mercy	3

Round 3

11:25 AM

Bunbury CC	v	Bunbury CGS	1
Mandurah BC	v	St M MacKillop	2
Frederick Irwin	v	O Lady o Mercy	3

Round 4

12:15 PM

Frederick Irwin	v	St M MacKillop	1
Bunbury CGS	v	O Lady o Mercy	2
Bunbury CC	v	Mandurah BC	3

Round 5

1:05 PM

O Lady o Mercy	v	St M MacKillop	1
Frederick Irwin	v	Bunbury CC	2
Bunbury CGS	v	Mandurah BC	3

Concluding acknowledgements commence at 1:50 PM

All matches consist of two 15 minute halves,
with a 5-minute half time break.

There is 15 minutes change-over time between games.

ACC AFL One Day Carnival Procedures & Rules

Associated and Catholic Colleges (ACC) reserves the right to cancel, change or amend any or all parts of this format leading up to and on the day including playing times and the fixtures. The ACC endeavours to uphold the Associations Motto of *'Sport in the Right Spirit'* in all stages of planning and running of this competition.

FIELD SET-UP

Set-up schools are named at the top of each carnial's fixtures. These schools are to arrive one hour prior to the first round, bring sufficient markers for each field boundary, and apply goal post pads to all posts. Most venues can provide goal post pads. The ACC will notify schools if they are required to bring a set.

At the end of the final round of matches, all schools are required to assist with the return of goal post pads and oval markers.

BRIEFING	for Coaches/Managers, Captains and Umpires will occur at a central location at 9:15 a.m. at all venues.
TIMING	Central timing will be used at all venues. All rounds will start on time; coaches are expected to have their teams briefed and on field in position before the starting siren.
FORMAT	All fixtures will be 2 halves with a 5-minute half time break. (See fixture pages.)
UMPIRES	<p>Each team is to provide an appropriately attired goal umpire with white goal flags. This can be a senior student or appropriate adult deemed competent for the role. Players are not to be used as goal umpires.</p> <p>Most field umpires will be WAFC accredited umpires sourced by the ACC through the WAFC. If schools are required to bring a field umpire, they will be alerted to this via email ahead of the carnival date.</p>
FOOTBALLS	Each school must provide their own game and warm-up footballs for the day. Size 4 leather footballs are to be used.
WEATHER	In case of wet weather, teams are encouraged to bring a small pop-up tent for cover around the ovals. There is some shelter around the club rooms at most venues.

SQUAD NUMBERS & AGE OF PLAYERS

In Divisions 1-3, teams are of 18 players. In Divisions 4-6, teams are of 15 players. Each team is permitted up to 7 interchange players. Match On-Field Equalisation rules apply.

Teams are made up of year 10 students. Students in years 7, 8, 11 or 12 cannot participate. Teams can be supplemented with year 9 students if the following applies:

1. For Divisions 1-3, there is a maximum of six Year 9 students.
2. For Divisions 4-6, there is a maximum of five Year 9 students.
3. Schools do not promote talented Year 9 students. This is not in the spirit of the competition.

For the Division 1 carnivals, a team list must be submitted to the ACC two working days before the event.

UNIFORMS & PLAYER EQUIPMENT

All players MUST wear the official school AFL football uniform. This should include the same shorts, socks and guernsey. Schools should check their fixtures for possible similarities of colours with opponents and come prepared for this. No jewellery can be worn. Runners and water carriers must be wearing school PE shirt and shorts or appropriate vests.

Mouth guards are strongly recommended by the ACC for all players. Schools allowing players to play without mouth guards take full responsibility for any injuries incurred.

DRINKS/FOOD

Each team is responsible for this. Drinking water is available at all venues for refilling water bottles. Students should be advised to bring a packed lunch and eat during their bye round or lunch break depending upon their fixtures. Team Managers/Coaches can bring an esky with ice, drink containers etc. A canteen might be available at some venues; you will be notified if this is to be the case.

TOILETS There are toilets made available at all venues.

WARM-UP Teams can arrive 30-45 minutes prior to the Round 1 start time for their warm-up.

FIRST AID St John Ambulance will be available at all venues (organised by the ACC).

START AND END OF GAME ACKNOWLEDGEMENTS

The first named team lines up in the centre of the ground and waits until the other team lines up opposite. At the completion of the game each team captain will call his team to give three cheers to the other team.

EVENT RULES are in accordance with the AFL Laws of Australian Football and WAFC 2025 Competition Rules for Year 10 Girls & Boys.

COMPETITION STRUCTURE

After each year's competition, schools will be elevated or relegated from their allocated division depending on where they placed. The following protocols apply to this process:

The 1st placed school in each division will be elevated to the higher division, e.g. winner of division 3 will be elevated to division 2, etc. and the lowest placed school in each division will be relegated to the lower division, e.g. last place for division 3 will be relegated to division 4, etc.

In the event that the South West carnival winning school withdraws from their place in the division 1 carnival, the winner of the second division has the option to play in this carnival in that same year. The following applies;

- a) If they choose to play in Div 1 and they place 5th, they will be relegated back to Division 2 for the following year.
- b) If they place higher than 5th, they will remain in division 1 for the following year.
- c) If they choose not to play, they will be elevated to division 1 in the following year.

POINTS FOR GAMES: 2 points for a win. 1 point for a draw and 0 points for a loss.

SCORECARDS

Scorecards are to be signed by **both team coaches** at the completion of each fixture. It is assumed that scoring discrepancies are settled immediately at the conclusion of the game and that all results handed in to the ACC are final.

RESULTS Carnival fixtures, results and ladders are available via *SportsDash*.

POST-GAME

Presentations/acknowledgements will commence ASAP following the final round of fixtures. All players and coaches are asked to make their way to the designated area promptly once equipment has been brought in. At the Division 1 Carnival, a representative from the WAFC will attend to present the winning team and players with the team trophy/perpetual cup and medallions. All other divisions will be presented with a perpetual shield.

MATCH OPERATIONS

Football - Size 4 leather footballs.

Ground size - 135m-185 (L) x 110m-155m (W).

Positions as per the Laws of Australian Football and the WA Football '*Match On-Field Equalisation (Even up and Even Down)*' Policies.

Out of Bounds - Last Possession Rule

From a kick or handball, a free kick is to be awarded to the nearest opponent.

If a player runs the ball over the boundary line, a free kick is to be awarded to the nearest opponent.

If the ball is off hands or a player's body, a ball-up is to occur 10m in from the boundary line.

If there is any doubt as to whose free kick it is, a ball-up is to occur 10m in from the boundary line.

Deliberate Rushed Behinds - will be paid as per the ASFL Laws of the Game.

Protected Area - The protected area at this level is 5m.

Order-off Rule - To be applied as per the Send Off Rule (Yellow and Red Cards). ACC stipulates that a player receiving a Red Card may not enter the playing surface for the remainder *of the day*; however, depending on school staffing, the player may sit with the bench.

Tackling – Tackling, bumping, smothering and shepherding is permitted as per AFL Laws of the game.

High Contact - All high contact shall be paid as a free kick regardless if the ball carrier was responsible for the high contact via a shrug, drop, arm lift or duck.

COMPETITION ROLES

Field Umpires

All umpires must comply with the AFL Law of Australian Football, WAFC Junior and Youth Rules and Regulations and any competition variations adopted by the governing bodies.

- Should a field umpire not be available to officiate at any match, the opposing coaches or team officials may agree to appoint any person they deem appropriate to act in that capacity.
- All field umpires shall be suitably attired for the match.
- The collection of umpire related match documents is at the discretion of the WAFC.
- Any officially appointed emergency umpire will have the same powers as the central umpires.

Goal Umpires

Each competing team shall supply a goal umpire who should be of sufficient knowledge and competency to carry out all responsibilities of the position, as defined in the Laws of the Game.

- Goal umpires will wear the approved attire and have a minimum of two signalling flags.
- Goal umpires will be supplied with a scorecard and should understand how to complete it correctly.
- Goal umpires will keep a record of each team's score during the game. They will compare scorecards with the other goal umpire at the end of each half.
- At the conclusion of the game, the goal umpires will check scorecards, verify they are the same, have them signed by both Team Coaches and hand them to the ACC Carnival Manager.
- The goal umpire will endeavour to keep the area immediately behind the goal line clear of spectators and other obstructions.
- The goal umpire is not permitted to coach, encourage or otherwise engage with players.

Boundary umpires

Boundary umpires are not required as the Last Possession Rule will apply as per 'Out of Bounds'.



*Find fixtures & results online
at SportsDash*



History of Winners

	Division 1	Division 2	Division 3	Division 4	Division 5	Division 6	SW Division
2019	Bunbury CC	La Salle	Nagle CC	Irene McCormack	Lumen Christi	n.a.	Bunbury CC
2020	Sacred Heart	Mater Dei	n.a.	John XXIII	Helena	n.a.	Mandurah CC
2021	Emmanuel CC	Mazenod	Newman	Irene McCormack	Ursula Frayne	Kolbe CC	Mandurah CC
2022	Bunbury CC	Corpus Christi	John XXIII	Kennedy BC	All Saints'	Edmund Rice	Mandurah CC
2023	Emmanuel CC	John XXIII	Nagle CC	Seton CC	Ursula Frayne	Mother Teresa	Mandurah CC
2024	Emmanuel CC	CBC	Kolbe CC	La Salle	Quinns BC	Lumen Christi	Our Lady of Mercy